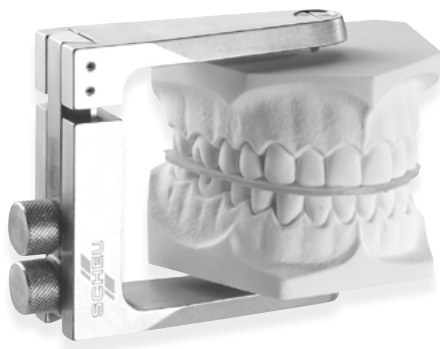
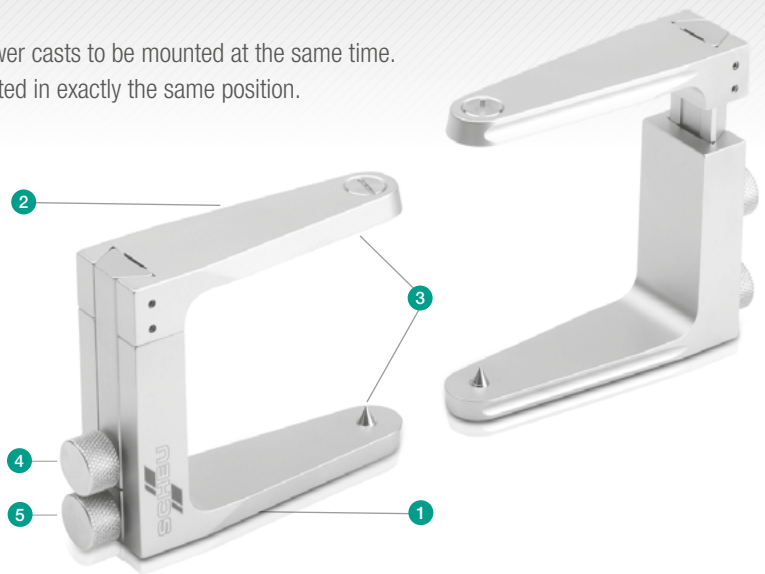


# Split-Fixator from SCHEU-DENTAL: The Original

The Split-Fixator is a vertically adjustable occlusal holder with a bite lock. It is used for activator, bionator, positioner and Fraenkel working models.

Centering tips on the arms of the fixator enable the upper and lower casts to be mounted at the same time. With the split system plaster models can be removed and reinserted in exactly the same position.

- 1 Base for mounting the lower jaw
- 2 Angle for mounting the upper jaw
- 3 Centering tips
- 4 Screw for vertical adjustment of the occlusion
- 5 Screw for adjusting bite lock



## Mounting of the models

Fasten the centering tips of the fixator arms, lubricate the fixator arms, wax upper and lower models together, fix the models between the centering tips and fasten the screw at the back of the fixator. Use the longer arm (the one with the SCHEU-DENTAL logo) as the base for mounting the lower jaw.

Cover both model bases with plaster, imbed lower model in plaster and fill up upper model to make the surface even with the fixator. Before the plaster sets, clean plaster from arms and screw slots.

## Removal of the models

Unscrew the centering tips completely and remove the models carefully. Before reinserting the models, take care that the contact surfaces of the plaster models are clean and that each model fits together on the correct fixator arm.



## Delivery program:

<b>Split-Fixator</b>	<b>5380</b>
----------------------	-------------

## Spare parts:

<b>Tumb screw</b>	<b>5380.004</b>
<b>Centering tips</b>	<b>5380.005</b>
<b>Stopper</b>	<b>5380.810</b>

